

Norma IRAM 2269

Transformadores Monofásicos Monoposte

Relación 7620 ± 5% /231 V/V

| Potencia (KVA) | Pérdidas (W) | | Ucc (%) | Dimensiones (mm) | | | | Peso (kg) |
|----------------|--------------|-----|---------|------------------|-------|------|----------|-----------|
| | Po | Pcc | | Largo | Ancho | Alto | Diámetro | |
| * 3 | 25 | 90 | 4,5 | 450 | 370 | 755 | 280 | 60 |
| 5 | 30 | 160 | 4,5 | 485 | 370 | 815 | 315 | 80 |
| 10 | 45 | 290 | 4,5 | 485 | 410 | 760 | 315 | 90 |
| 16 | 60 | 390 | 4,5 | 500 | 430 | 840 | 330 | 125 |
| 25 | 85 | 600 | 4,5 | 560 | 580 | 850 | 380 | 175 |
| 40 | 110 | 900 | 4,5 | 610 | 610 | 1030 | 380 | 240 |

* Potencia no Normalizada



Norma IRAM 2269

Transformadores Monofásicos Monoposte

Relación 13200 ± 5% /231 V/V

| Potencia (KVA) | Pérdidas (W) | | Ucc (%) | Dimensiones (mm) | | | | Peso (kg) |
|----------------|--------------|------|---------|------------------|-------|------|----------|-----------|
| | Po | Pcc | | Largo | Ancho | Alto | Diámetro | |
| 5 | 30 | 160 | 4,5 | 485 | 370 | 815 | 315 | 80 |
| 10 | 45 | 290 | 4,5 | 485 | 410 | 760 | 315 | 90 |
| 16 | 60 | 390 | 4,5 | 500 | 430 | 840 | 330 | 125 |
| 25 | 85 | 600 | 4,5 | 560 | 580 | 850 | 380 | 175 |
| 40 | 110 | 900 | 4,5 | 610 | 610 | 1030 | 380 | 240 |
| 63 | 220 | 1150 | 4 | 775 | 740 | 1150 | 520 | 390 |
| * 75 | 245 | 1400 | 4 | 775 | 740 | 1250 | 520 | 420 |
| 100 | 270 | 1600 | 4 | 775 | 810 | 1250 | 520 | 480 |

* Potencia no Normalizada



Norma IRAM 2269

Transformadores Monofásicos Monoposte

Relación 19050 ± 5% /231 V/V

| Potencia (KVA) | Pérdidas (W) | | Ucc (%) | Dimensiones (mm) | | | | Peso (kg) |
|----------------|--------------|-----|---------|------------------|-------|------|----------|-----------|
| | Po | Pcc | | Largo | Ancho | Alto | Diámetro | |
| * 5 | 45 | 170 | 4,5 | 520 | 500 | 1190 | 330 | 110 |
| 10 | 60 | 320 | 4,5 | 560 | 590 | 1400 | 380 | 150 |
| 16 | 75 | 440 | 4,5 | 660 | 560 | 1500 | 455 | 260 |
| 25 | 110 | 660 | 4,5 | 660 | 600 | 1550 | 455 | 295 |

* Potencia no Normalizada



Norma IRAM 2269

Transformadores Monofásicos Monoposte

Relación 33000 ± 5% /231 V/V

| Potencia (KVA) | Pérdidas (W) | | Ucc (%) | Dimensiones (mm) | | | | Peso (kg) |
|----------------|--------------|-----|---------|------------------|-------|------|----------|-----------|
| | Po | Pcc | | Largo | Ancho | Alto | Diámetro | |
| * 5 | 45 | 170 | 4,5 | 520 | 500 | 1190 | 330 | 130 |
| 10 | 60 | 320 | 4,5 | 560 | 590 | 1400 | 380 | 165 |
| 16 | 75 | 440 | 4,5 | 660 | 560 | 1500 | 455 | 275 |
| 25 | 110 | 660 | 4,5 | 660 | 600 | 1550 | 455 | 305 |

* Potencia no Normalizada



Norma IRAM 2269

Transformadores Trifásicos Monoposte

Relación $13200 \pm 5\%$ /400-231 V/V

| Potencia (KVA) | Pérdidas (W) | | Ucc (%) | Largo | Dimensiones (mm) | | | Peso (kg) |
|----------------|--------------|------|---------|-------|------------------|------|----------|-----------|
| | Po | Pcc | | | Ancho | Alto | Diámetro | |
| 10 | 80 | 340 | 4,5 | 510 | 490 | 1050 | 355 | 160 |
| 16 | 100 | 550 | 4,5 | 550 | 510 | 1130 | 380 | 205 |
| 25 | 140 | 650 | 4,5 | 640 | 585 | 1220 | 450 | 295 |
| 40 | 180 | 1050 | 4,5 | 670 | 635 | 1270 | 450 | 350 |
| 63 | 230 | 1450 | 4,5 | 720 | 700 | 1350 | 520 | 470 |



Norma IRAM 2269

Transformadores Trifásicos Monoposte

Relación $33000 \pm 5\%$ /400-231 V/V

| Potencia (KVA) | Pérdidas (W) | | Ucc (%) | Largo | Dimensiones (mm) | | | Peso (kg) |
|----------------|--------------|-----|---------|-------|------------------|------|----------|-----------|
| | Po | Pcc | | | Ancho | Alto | Diámetro | |
| 10 | 100 | 300 | 4,5 | 760 | 650 | 1820 | 520 | 425 |
| 16 | 120 | 450 | 4,5 | 760 | 650 | 1820 | 520 | 435 |
| 25 | 160 | 550 | 4,5 | 760 | 650 | 1820 | 520 | 480 |



Norma IRAM 2269

Transformadores Trifasicos Monoposte

Relación $13200 \pm 2 \times 2,5\%$ /400-231 V/V

| Potencia (KVA) | Pérdidas (W) | | Ucc (%) | Largo | Dimensiones (mm) | | | Peso (kg) |
|----------------|--------------|------|---------|-------|------------------|------|--------|-----------|
| | Po | Pcc | | | Ancho | Alto | Trocha | |
| 63 | 270 | 1370 | 4,0 | 890 | 785 | 1015 | - | 480 |
| 100 | 350 | 1750 | 4,0 | 930 | 795 | 1130 | - | 660 |
| 160 | 500 | 2500 | 4,0 | 1100 | 780 | 1130 | - | 830 |
| 200 | 600 | 3000 | 4,0 | 1230 | 815 | 1110 | - | 980 |
| 250 | 700 | 3500 | 4,0 | 1190 | 850 | 1215 | - | 1150 |

Transformadores Trifasicos Monoposte

Relación $33000 \pm 2 \times 2,5\%$ /400-231 V/V

| Potencia (KVA) | Pérdidas (W) | | Ucc (%) | Largo | Dimensiones (mm) | | | Peso (kg) |
|----------------|--------------|------|---------|-------|------------------|------|--------|-----------|
| | Po | Pcc | | | Ancho | Alto | Trocha | |
| 40 | 290 | 900 | 4,0 | 1100 | 715 | 1470 | - | 635 |
| 63 | 320 | 1500 | 4,0 | 1160 | 750 | 1370 | - | 780 |
| 100 | 420 | 1900 | 4,0 | 1250 | 825 | 1430 | - | 850 |
| 160 | 600 | 2800 | 4,0 | 1330 | 840 | 1500 | - | 1050 |



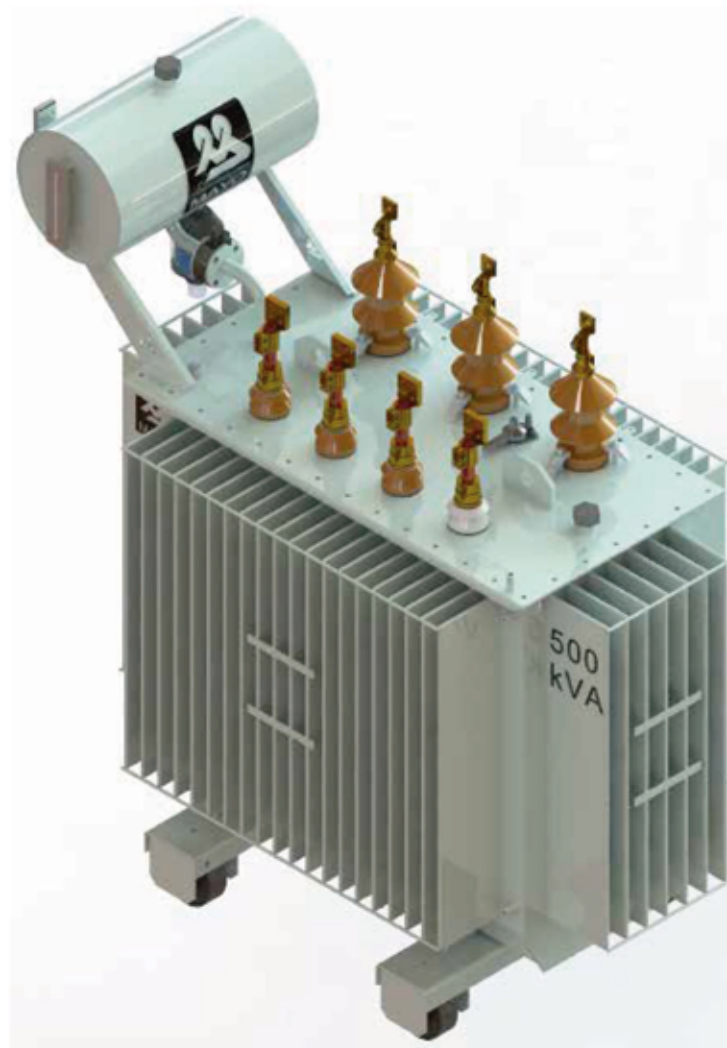
Norma IRAM 2250

Transformadores de Distribución

Relación $13200 \pm 2 \times 2,5\%$ /400-231 V/V

| Potencia (KVA) | Pérdidas (W) | | Ucc (%) | Dimensiones (mm) | | | | Peso (kg) |
|-------------------|--------------|-------|------------|------------------|-------|------|--------|--------------|
| | Po | Pcc | | Largo | Ancho | Alto | Trocha | |
| 25 | 160 | 600 | 4,0 | 1120 | 700 | 1160 | 600 | 280 |
| *40 | 200 | 900 | 4,0 | 1135 | 700 | 1230 | 600 | 320 |
| 63 | 270 | 1350 | 4,0 | 1175 | 700 | 1260 | 600 | 405 |
| 100 | 350 | 1750 | 4,0 | 1215 | 700 | 1370 | 600 | 510 |
| *125 | 420 | 2100 | 4,0 | 1235 | 700 | 1370 | 600 | 576 |
| 160 | 500 | 2500 | 4,0 | 1290 | 700 | 1370 | 600 | 780 |
| 200 | 600 | 3000 | 4,0 | 1340 | 760 | 1410 | 600 | 850 |
| 250 | 700 | 3500 | 4,0 | 1340 | 850 | 1500 | 700 | 900 |
| 315 | 850 | 4250 | 4,0 | 1600 | 870 | 1600 | 700 | 1220 |
| 400 | 1000 | 5000 | 4,0 | 1630 | 870 | 1790 | 700 | 1480 |
| 500 | 1200 | 6000 | 4,0 | 1790 | 890 | 1830 | 700 | 1670 |
| 630 | 1450 | 7250 | 4,0 | 1830 | 990 | 1730 | 800 | 1890 |
| 800 | 1750 | 8750 | 5,0 | 2110 | 1110 | 1790 | 800 | 2510 |
| 1000 | 2000 | 10500 | 5,0 | 2100 | 1150 | 1870 | 800 | 3020 |
| 1250 | 2300 | 13800 | 5,0 | 2240 | 1280 | 1970 | 1000 | 3650 |
| 1600 | 2700 | 17000 | 6,0 | 2450 | 1400 | 2200 | 1000 | 4650 |
| 2000 | 3000 | 21500 | 6,0 | 2500 | 1600 | 2600 | 1000 | 5700 |
| 2500 | 3300 | 24800 | 6,0 | 2500 | 1600 | 2600 | 1200 | 7700 |

* Potencias no Normalizas



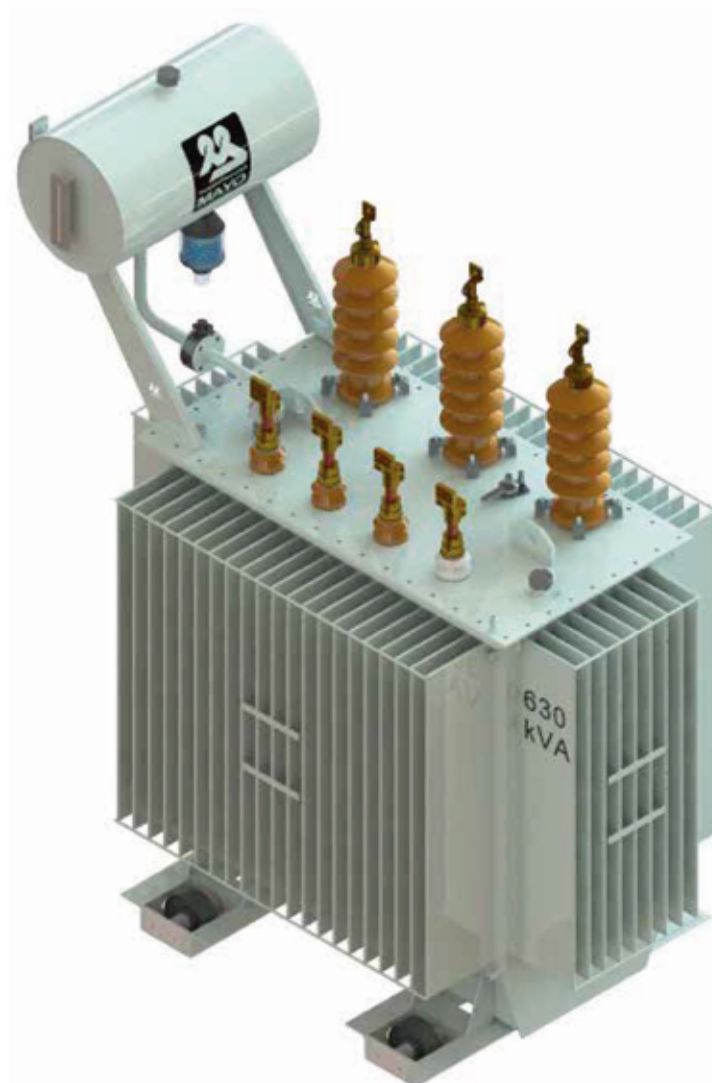
Norma IRAM 2250

Transformadores de Distribución

Relación $33000 \pm 2 \times 2,5\%$ /400-231 V/V

| Potencia (KVA) | Pérdidas (W) | | Ucc (%) | Dimensiones (mm) | | | Trocha | Peso (kg) |
|-------------------|--------------|-------|------------|------------------|-------|------|--------|--------------|
| | Po | Pcc | | Largo | Ancho | Alto | | |
| 25 | 190 | 650 | 4,0 | 1485 | 700 | 1620 | 600 | 585 |
| *40 | 290 | 900 | 4,0 | 1485 | 700 | 1620 | 600 | 635 |
| 63 | 320 | 1500 | 4,0 | 1575 | 700 | 1656 | 600 | 740 |
| 100 | 420 | 1900 | 4,0 | 1575 | 700 | 1700 | 600 | 840 |
| 160 | 600 | 2800 | 4,0 | 1545 | 790 | 1700 | 600 | 1030 |
| 200 | 700 | 3250 | 4,0 | 1700 | 720 | 1915 | 700 | 1200 |
| 250 | 850 | 4000 | 4,0 | 1670 | 850 | 2050 | 700 | 1360 |
| 315 | 950 | 4800 | 4,0 | 1760 | 850 | 2050 | 700 | 1540 |
| 400 | 1200 | 5600 | 4,0 | 1800 | 850 | 2050 | 700 | 1755 |
| 500 | 1250 | 6400 | 4,0 | 1830 | 850 | 2190 | 700 | 2000 |
| 630 | 1500 | 7600 | 4,0 | 1920 | 1070 | 2240 | 800 | 2490 |
| 800 | 1800 | 9800 | 5,0 | 2030 | 1210 | 2170 | 800 | 3100 |
| 1000 | 2200 | 11700 | 5,0 | 2180 | 1210 | 2210 | 800 | 3800 |
| 1250 | 2500 | 14200 | 5,0 | 2500 | 2000 | 2600 | 1000 | 4300 |
| 1600 | 2900 | 17800 | 6,0 | 2700 | 2400 | 2750 | 1000 | 5200 |
| 2000 | 3200 | 22000 | 6,0 | 2900 | 2600 | 2900 | 1000 | 5600 |
| 2500 | 3600 | 26000 | 6,0 | 2800 | 2800 | 3100 | 1200 | 7700 |

* Potencia no Normaliza



Norma IRAM 2250

Transformadores de Distribución Llenado Integral

Relación $13200 \pm 2 \times 2,5\%$ /400-231 V/V

| Potencia (KVA) | Pérdidas (W) | | Ucc (%) | Dimensiones (mm) | | | | Peso (kg) |
|----------------|--------------|-------|---------|------------------|-------|------|--------|-----------|
| | Po | Pcc | | Largo | Ancho | Alto | Trocha | |
| 25 | 160 | 600 | 4,0 | 780 | 700 | 920 | 600 | 380 |
| *40 | 200 | 900 | 4,0 | 810 | 700 | 990 | 600 | 410 |
| 63 | 270 | 1350 | 4,0 | 890 | 780 | 1020 | 600 | 505 |
| 100 | 350 | 1750 | 4,0 | 920 | 800 | 1130 | 600 | 660 |
| 160 | 500 | 2500 | 4,0 | 1100 | 780 | 1130 | 600 | 830 |
| 200 | 600 | 3000 | 4,0 | 1400 | 920 | 1300 | 600 | 980 |
| 250 | 700 | 3500 | 4,0 | 1180 | 890 | 1215 | 700 | 1150 |
| 315 | 850 | 4250 | 4,0 | 1415 | 870 | 1430 | 700 | 1325 |
| 400 | 900 | 5000 | 4,0 | 1400 | 850 | 1570 | 700 | 1550 |
| 500 | 1200 | 6000 | 4,0 | 1510 | 905 | 1600 | 700 | 1825 |
| 630 | 1450 | 7250 | 4,0 | 1670 | 985 | 1510 | 800 | 2125 |
| 800 | 1750 | 8750 | 5,0 | 1800 | 1100 | 1700 | 800 | 2550 |
| 1000 | 2000 | 10500 | 5,0 | 1840 | 1150 | 1600 | 800 | 3335 |
| 1250 | 2300 | 13800 | 5,0 | 1990 | 1260 | 1700 | 1000 | 4000 |
| 1600 | 2700 | 17000 | 6,0 | 2200 | 1400 | 1900 | 1000 | 4900 |
| 2000 | 3000 | 21500 | 6,0 | 2500 | 1600 | 2200 | 1000 | 5700 |
| 2500 | 3300 | 24800 | 6,0 | 2700 | 1600 | 2000 | 1200 | 7700 |

* Potencia no Normaliza



Norma IRAM 2250

Transformadores de Distribución Llenado Integral

Relación $33000 \pm 2 \times 2,5\%$ /400-231 V/V

| Potencia (KVA) | Pérdidas (W) | | Ucc (%) | Dimensiones (mm) | | | Trocha | Peso (kg) |
|-------------------|--------------|-------|------------|------------------|-------|------|--------|--------------|
| | Po | Pcc | | Largo | Ancho | Alto | | |
| 63 | 320 | 1500 | 4,0 | 1130 | 805 | 1430 | 600 | 800 |
| 100 | 420 | 1900 | 4,0 | 1110 | 835 | 1450 | 600 | 890 |
| 160 | 600 | 2800 | 4,0 | 1220 | 850 | 1460 | 600 | 1080 |
| 200 | 700 | 3250 | 4,0 | 1480 | 980 | 1720 | 600 | 1250 |
| 250 | 850 | 4000 | 4,0 | 1290 | 980 | 1865 | 700 | 1350 |
| 315 | 950 | 4800 | 4,0 | 1410 | 950 | 1870 | 700 | 1590 |
| 400 | 1150 | 5750 | 4,0 | 1600 | 1000 | 1880 | 700 | 2050 |
| 500 | 1250 | 6400 | 4,0 | 1500 | 1000 | 2015 | 700 | 2050 |
| 630 | 1500 | 7600 | 4,0 | 1610 | 1070 | 2015 | 800 | 2490 |
| 800 | 1800 | 9800 | 5,0 | 2030 | 1210 | 2170 | 800 | 3100 |
| 1000 | 2200 | 11700 | 5,0 | 2180 | 1650 | 2210 | 800 | 3800 |
| 1250 | 2500 | 14200 | 5,0 | 2210 | 2000 | 2300 | 1000 | 4300 |
| 1600 | 2900 | 17800 | 6,0 | 2500 | 2600 | 2600 | 1000 | 5300 |



Normas IRAM 2476

Transformadores de Subtransmisión (Tipo A)

Relación $33.000 \pm 2 \times 2,5\%$ /13.860 V/V

| Potencia (KVA) | Pérdidas (W) | | Ucc (%) | Dimensiones (mm) | | | | Peso (kg) |
|-------------------|--------------|-------|------------|------------------|-------|------|--------|--------------|
| | Po | Pcc | | Largo | Ancho | Alto | Trocha | |
| 25 | 200 | 800 | 5,0 | 1600 | 700 | 1620 | - | 720 |
| 40 | 300 | 1200 | 5,0 | 1600 | 700 | 1620 | - | 750 |
| 63 | 400 | 1800 | 5,0 | 1690 | 700 | 1770 | - | 870 |
| 100 | 420 | 2100 | 5,0 | 1700 | 700 | 1770 | - | 985 |
| 160 | 600 | 3000 | 5,0 | 1750 | 720 | 1770 | - | 1170 |
| 200 | 720 | 3600 | 5,0 | 1780 | 1000 | 1850 | 850 | 1310 |
| 250 | 850 | 4250 | 5,0 | 1800 | 1000 | 1890 | 850 | 1430 |
| 315 | 1020 | 5100 | 5,0 | 1850 | 1000 | 1890 | 850 | 1650 |
| 400 | 1160 | 5800 | 5,0 | 1920 | 1000 | 2050 | 850 | 1900 |
| 500 | 1320 | 6600 | 5,0 | 2000 | 1050 | 2250 | 850 | 2170 |
| 630 | 1600 | 8000 | 5,0 | 2150 | 1100 | 2250 | 850 | 2575 |
| 800 | 1900 | 9500 | 5,0 | 2250 | 1150 | 2300 | 850 | 3200 |
| 1000 | 2200 | 11500 | 5,0 | 2300 | 1300 | 2350 | 1000 | 3900 |
| 1250 | 2700 | 13500 | 5,0 | 2300 | 1300 | 2300 | 1000 | 4300 |
| 1600 | 3200 | 16000 | 5,0 | 2400 | 1300 | 2500 | 1000 | 5400 |
| 2000 | 3700 | 18500 | 5,0 | 2400 | 1400 | 2550 | 1000 | 5680 |



Normas IRAM 2476

Transformadores de Subtransmisión (Tipo B)

Relación $33.000 \pm 2 \times 2,5\%$ / 13.860 V/V

| Potencia (KVA) | Pérdidas (W) | | Ucc (%) | Dimensiones (mm) | | | | Peso (kg) |
|-------------------|--------------|-------|------------|------------------|-------|------|--------|--------------|
| | Po | Pcc | | Largo | Ancho | Alto | Trocha | |
| 2500 | 3200 | 21000 | 6 | 2600 | 2500 | 2750 | 1676 | 7400 |
| 3150 | 3300 | 25000 | 6 | 2600 | 2500 | 2750 | 1676 | 8000 |
| 3500 | 3800 | 26000 | 6 | 2750 | 2600 | 2750 | 1676 | 8600 |
| 4000 | 4000 | 26500 | 7 | 2850 | 2800 | 2760 | 1676 | 9200 |
| 5000 | 5600 | 27000 | 7 | 3100 | 2850 | 2950 | 1676 | 11500 |
| 6300 | * | * | 7 | * | * | * | * | * |
| 8000 | * | * | 8 | * | * | * | * | * |
| 10000 | * | * | 8 | * | * | * | * | * |
| 12500 | * | * | 8 | * | * | * | * | * |
| 16000 | * | * | 10 | * | * | * | * | * |
| 20000 | * | * | 11 | * | * | * | * | * |

Los valores expresados en la tabla anterior son de referencia y dependen de la especificación particular de cada usuario.

*Los valores dependen del proyecto en particular.

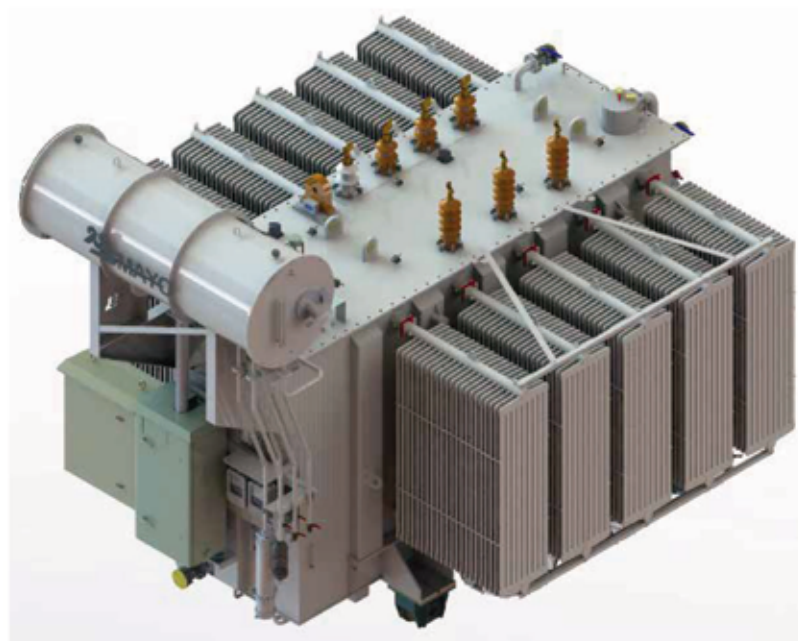
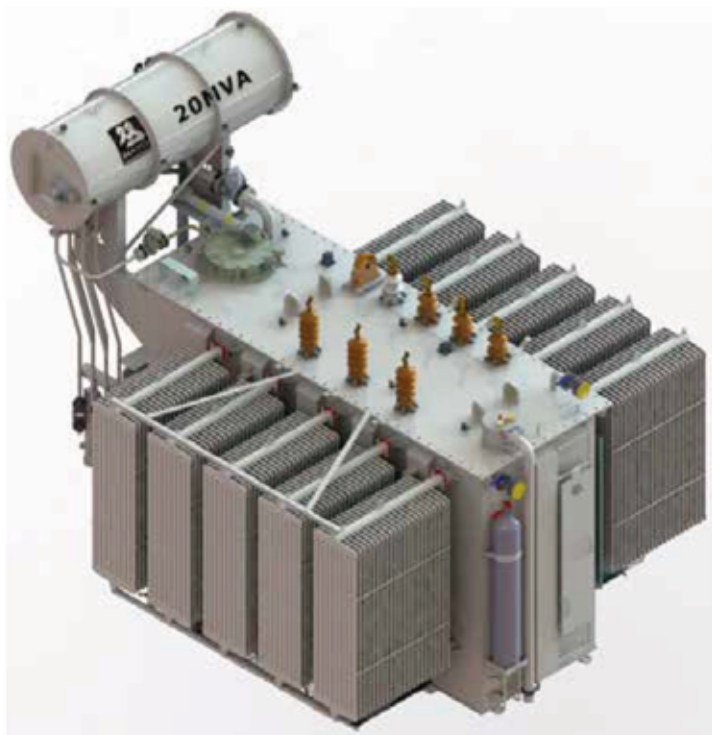
Estos transformadores pueden ser refrigerados de las siguientes formas:

ONAN

ONAN / ONAF

Además pueden ser provistos con regulador bajo carga (RBC)

Cuentan con tecnología CTC



Normas IRAM 2099

Transformadores de Potencia

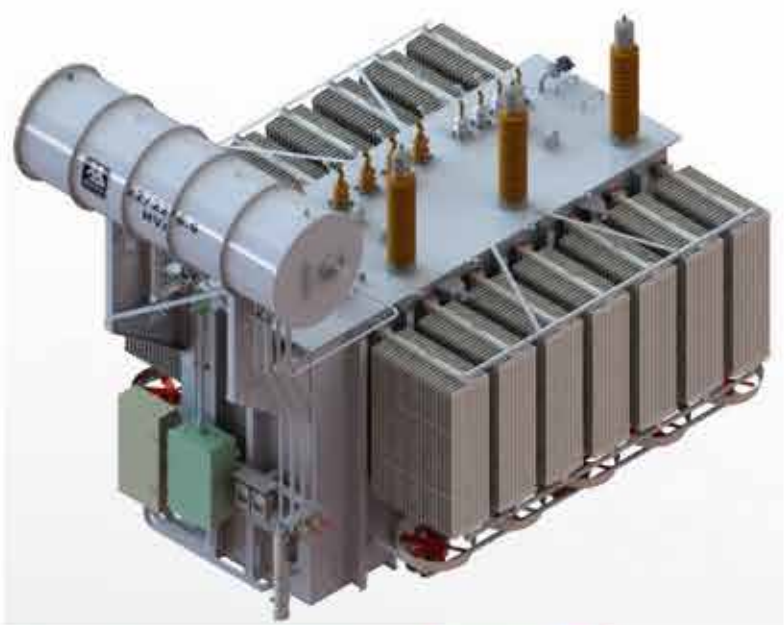
Se fabrican según especificaciones IRAM 2099, IEC 60076 o especificaciones técnicas particulares

Se construyen en potencias normalizadas desde 1.25 hasta 20MVA, en tensiones de 13.2 , 33, 66 KV - 132 KV.

Estos transformadores pueden ser refrigerados de las siguientes formas:

- ONAN
- ONAN / ONAF

Además pueden ser provistos con regulador bajo carga (RBC)



**TRANSFORMADORES HERMÉTICOS
PARA POZO**

Transformadores Herméticos para Pozo

Relación 13200 ± 2 x 2.5% / 400-231 V/V

| Potencia (KVA) | Pérdidas (W) | | Ucc (%) | Dimensiones (mm) | | | | Peso (kg) |
|-------------------|--------------|-------|------------|------------------|-------|------|--------|--------------|
| | Po | Pcc | | Largo | Ancho | Alto | Trocha | |
| 200 | 600 | 2400 | 4,0 | 1600 | 1100 | 1400 | 600 | 1500 |
| 500 | 1200 | 4800 | 4,0 | 1650 | 1100 | 1500 | 700 | 2300 |
| 800 | 1450 | 5800 | 5,0 | 1700 | 1150 | 1600 | 800 | 3100 |
| 1000 | 1800 | 10000 | 5,0 | 1800 | 1200 | 1650 | 800 | 3500 |

Aptos para instalación en cámaras subterráneas en las cuales existe el riesgo de inundación, estando previsto que los mismos puedan quedar sumergidos bajo agua.



Normas IRAM 2277

| Transformadores Secos Encapsulados | | | | | | | | | | |
|---|------|--------------|--------------|---------|-------|-------|-------|------|------------|----------------|
| Relación 14500 ± 2 x 2,5% / 400-231 V/V | | | | | | | | | | |
| Potencia (KVA) | Po | Pérdidas (W) | | Ucc (%) | Ruido | Largo | Ancho | Alto | Trocha | Diametro Rueda |
| | | Poc (95 °C) | Poc (120 °C) | | | | | | | |
| 100 | 440 | 1900 | 2000 | | | 1200 | 720 | 1000 | | |
| 125 | 510 | 2100 | 2250 | | | 1300 | 720 | 1300 | | |
| 160 | 620 | 2500 | 2700 | | 58 | 1500 | 800 | 1450 | 600 +/- 5 | 120 |
| 200 | 720 | 3000 | 3200 | | | 1500 | 800 | 1450 | | |
| 250 | 880 | 3500 | 3800 | | | 1500 | 800 | 1450 | | |
| 315 | 1000 | 4200 | 4550 | | | 1500 | 800 | 1450 | | |
| 400 | 1200 | 5100 | 5500 | | 60 | 1650 | 870 | 1600 | | |
| 500 | 1400 | 6050 | 6500 | 6 | | 1650 | 870 | 1600 | | |
| 630 | 1650 | 7350 | 7850 | | 62 | 1850 | 890 | 1800 | 800 +/- 5 | 160 |
| 800 | 2000 | 8700 | 9300 | | 64 | 2000 | 1085 | 1950 | | |
| 1000 | 2300 | 10200 | 10900 | | 64 | 2000 | 1085 | 1950 | | |
| 1250 | 2800 | 12300 | 13100 | | 65 | 2250 | 1085 | 2350 | | |
| 1600 | 3100 | 14800 | 15800 | | 66 | 2250 | 1085 | 2350 | | |
| 2000 | 3900 | 17600 | 18800 | | 66 | 2250 | 1085 | 2350 | 1000 +/- 5 | 200 |
| 2500 | 5000 | 21000 | 22400 | | 68 | 2550 | 1350 | 2550 | | |
| 3150 | 5100 | 22300 | 23100 | 7 | 68 | 2550 | 1350 | 2550 | | |

| Transformadores Secos Encapsulados | | | | | | | | | | |
|---|------|--------------|--------------|---------|-------|-------|-------|------|------------|----------------|
| Relación 36000 ± 2 x 2,5% / 400-231 V/V | | | | | | | | | | |
| Potencia (KVA) | Po | Pérdidas (W) | | Ucc (%) | Ruido | Largo | Ancho | Alto | Trocha | Diametro Rueda |
| | | Poc (95 °C) | Poc (120 °C) | | | | | | | |
| 100 | 640 | 2750 | 3000 | | | 1500 | 750 | 1400 | | |
| 160 | 850 | 3100 | 3300 | | 58 | 1500 | 750 | 1400 | 600 +/- 5 | 120 |
| 250 | 950 | 4150 | 4500 | | | 1550 | 800 | 1600 | | |
| 315 | 1200 | 4500 | 4900 | | | 1620 | 870 | 1695 | | |
| 400 | 1600 | 4600 | 4900 | | 60 | 1750 | 870 | 1800 | | |
| 500 | 1800 | 5100 | 5500 | | | 1900 | 890 | 1900 | 800 +/- 5 | 160 |
| 630 | 2100 | 8400 | 9000 | 6 | 62 | 1900 | 890 | 1900 | | |
| 800 | 2600 | 9200 | 9900 | | 64 | 2100 | 1100 | 2100 | | |
| 1000 | 3350 | 10000 | 10800 | | 64 | 2100 | 1100 | 2100 | | |
| 1250 | 3800 | 14100 | 15100 | | 65 | 2300 | 1200 | 2400 | | |
| 1600 | 4500 | 16100 | 17300 | | 66 | 2300 | 1200 | 2400 | | |
| 2000 | 4800 | 18700 | 20200 | | 66 | 2300 | 1200 | 2400 | 1000 +/- 5 | 200 |
| 2500 | 5000 | 20200 | 21800 | | 68 | 2600 | 1400 | 2600 | | |
| 3150 | 5100 | 22300 | 23100 | 7 | 68 | 2600 | 1400 | 2600 | | |

